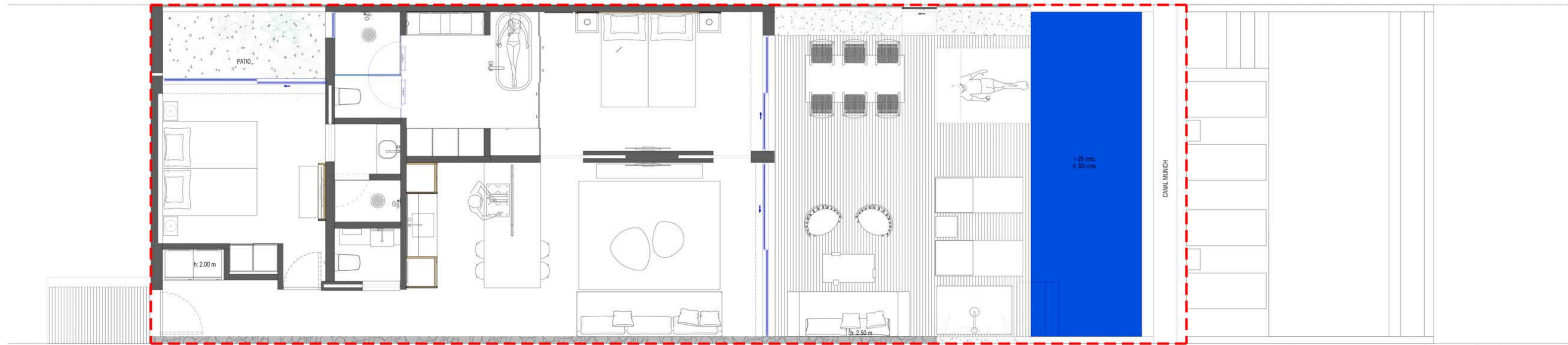
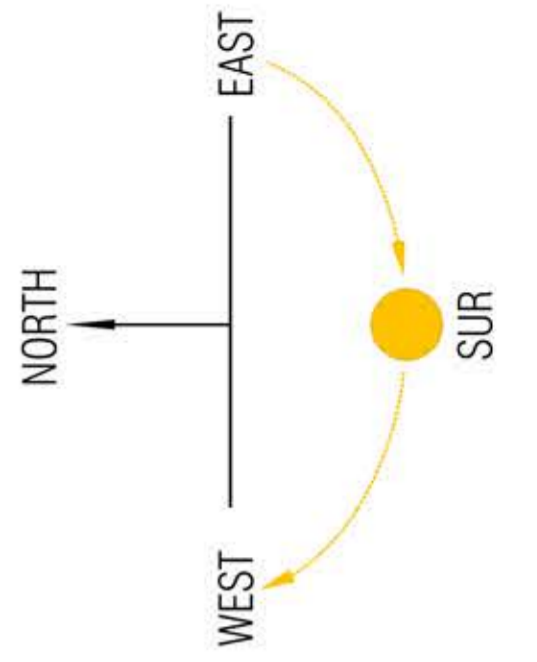


# TYPE 400



plot area:  $158,33 \text{ m}^2 + 5,94 \text{ m}^2 \text{ (storage)} = 164,27 \text{ m}^2$

constructed area:  $89,55 \text{ m}^2$

terrace area:  $39,21 \text{ m}^2$

garden area:  $5,80 \text{ m}^2$

swimming pool area:  $23,77 \text{ m}^2$